

May/June 2025

STAYING CONNECTED

JOIN OUR COMMUNITY

- SPECIAL EVENTS
- BUS OUTINGS
- ACTIVITIES & EXERCISE PROGRAMS

ELVIS VARIETY SHOW

\$10*

Wednesday
June 25th
11:00am



Ricky Neil-Vis performs Elvis and Country Classics. Ricky has smooth vocals, a great sense of humour and a fun-loving spirit.

Booking essential by
June 20th

Join us for lunch afterwards. \$13* (bookings essential).

Transport: \$5* each way (booking required & conditions apply)

BOOKINGS: **9880 4709**

WEBSITE: basscare.org.au



@basscareagedcare

SCAN TO
DISCOVER

BASSCARE



Rob's Take

Welcome to the May/June edition of *Staying Connected*. Autumn leaves are finally falling after a delayed end to Summer. It is incredible to think we are almost at the end of the first quarter of the 21st century! It seems only recently we were worried about the impact of Y2K!

Sunday May 11th is Mother's Day, a very special day to say thanks to all the mums in our community. May also brings Cancer Council's Australia's Biggest Morning Tea, an amazing fundraiser for those impacted by cancer. Please join us for a lovely morning tea to support a great cause.

Many of the ideas for activities at Samarinda Community Centre and Canterbury Centre come from client and volunteer suggestions. In June, we invite you to community feedback sessions to provide your input into the programs and activities you want offered at our Community Centres, see page 3 for details.

Your feedback is so important to ensure our Community Centres remain "community driven".

Rob Howell,
Program Leader
Community Centres

*"The future belongs to those who believe
in the beauty of their dreams."*

~
Eleanor Roosevelt

Staying Connected May/June 2025

CONTENTS	Page
∞ Themed Lunch & Feedback	3
∞ Programs & Special Event	4
∞ Samarinda Community Centre Outings	5
∞ Canterbury Centre May Outings	6
∞ Canterbury Centre June Outings	7
∞ Group Activities	8
∞ Lifelong Learning Group	9
∞ Wednesday Afternoon Movies	10
∞ Friday Flicks	11
∞ North Balwyn Senior Centre Information	
∞ Fee Information	12
∞ Terms and Conditions	

**To enquire about any of these activities
and services please contact:**

Canterbury Centre

2 Rochester Road, Canterbury

Office Hours: Monday – Friday 9.00am – 3.30pm
(closed Public Holidays)

PHONE 9880 4709

EMAIL socialsupport@basscare.org.au

WEB basscare.org.au

Samarinda Community Centre

296 High Street Ashburton

Office Hours: Monday – Friday 9.00am – 4.30pm
(closed Public Holidays)

PHONE 9058 6060

EMAIL social@basscare.org.au

1940's

Themed Lunch Celebration

Wednesday
June 11th
12.30pm

Step back in time with our **1940's Themed Lifelong Learning Group Session & Lunch Celebration!**

Enjoy a morning of glamour, swing music and nostalgia as we explore 1940's fashion and culture. **LLG session \$10* 10.30am.**

Afterward, indulge in a classic 1940's meal paired with a vintage-inspired mocktail or sparkling wine. Dress in your best 1940's attire and join us for a truly immersive experience! **Themed Lunch \$20 12.30pm.**

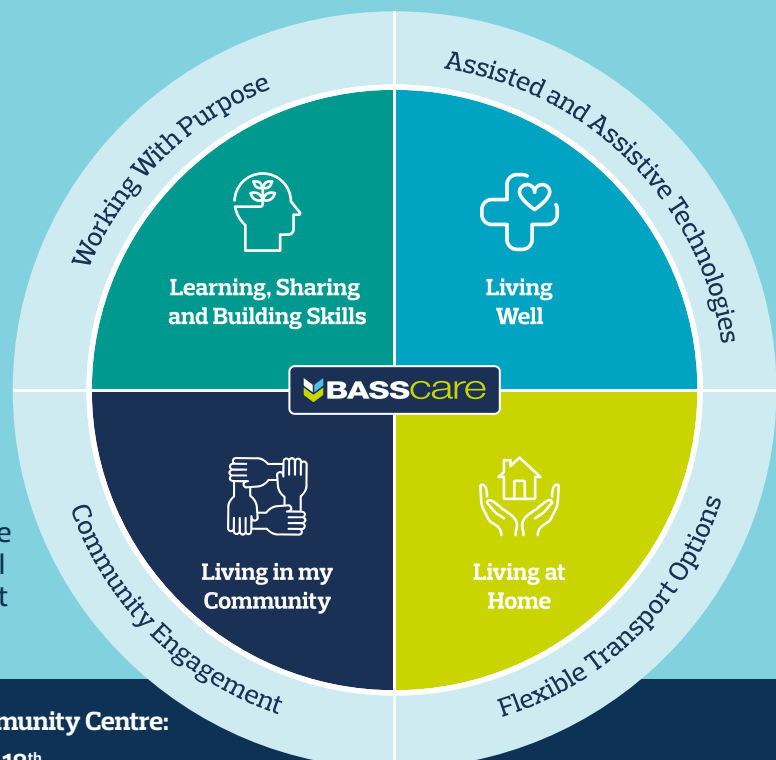
Bookings essential by **Friday June 6th**

Canterbury Centre

Transport: \$5* each way (booking required & conditions apply)

Community Feedback Sessions

Since 2021 clients have gathered at Samarinda Community Centre to explore the needs of our community and provide feedback on the services offered in our Community Centre. Community members are invited to a facilitated session to provide feedback on services and programs at Canterbury Centre and Samarinda Community Centre following the BASScare/Samarinda merger. Updates will also be provided by BASScare Management and Boroondara Council.



Canterbury Centre:

Thursday June 12th
2.00pm – 3.30pm
(RSVP by June 5th)

Samarinda Community Centre:

Wednesday June 18th
2.30pm – 4.00pm
(RSVP by June 11th)

3 Week Digital Course

iPhone Course at the Samarinda Community Centre, spaces limited bookings essential!

Mobile phones keep us connected and simplify life by providing up-to-date information, online services, entertainment and ways to stay in touch with loved ones.

Join Rubin for 3 step-by-step classes with detailed handouts to enhance your mobile phone skills. Learn about your phone's functions and features, and gain confidence in using your device.

Weekly Sessions, Starting
Friday May 9th
1.30pm



Biggest Morning Tea at Canterbury Centre

Join BASScare's morning tea fundraiser for cancer support! Enjoy homemade treats and help raise funds for The Cancer Council. Bring a plate to share! **RSVP: Friday May 9th**

Wednesday
May 14th 10.30am

FREE

Gold coin
donation to The
Cancer Council



Understanding Online Banking

Join Rubin at the Canterbury Centre as he demonstrates how to manage accounts, transfer funds, pay bills online and avoid scams. Providing hands-on practice to ensure you feel comfortable with online banking.

**Join us for a 3 – course meal prior
\$13* bookings essential**

1.30pm – 3.30pm
Limited spaces available.

Monday June 23rd

RSVP: Thursday June 19th, bookings essential!

FREE



Transport to Canterbury Centre and Samarinda Community Centre: \$5* each way
(booking required & conditions apply)

SAMARINDA COMMUNITY CENTRE Outings

**To receive the subsidised price you will need a My Aged Care number and referral.*

For bookings call 9058 6060

MAY Outings

TUESDAY 6th	The Grand Hotel, Mornington A delicious meal on the Mornington Peninsula. Built over 100 years ago, it's an established favourite offering lovely food, friendly service and good value for money.	\$15* (plus lunch)
TUESDAY 13th	Templestowe Hotel Leafy Templestowe provides a beautiful backdrop to your delicious lunch.	\$15* (plus lunch)
TUESDAY 20th	Tooradin Sports Club Marvel as your delicious seasonal lunch is delivered by a robot waiter!	\$15* (plus lunch)
TUESDAY 27th	Mystery Bus Outing Where are we headed? What awaits us there? Only one person holds the secret.	\$15* (plus lunch)

JUNE Outings

TUESDAY 3rd	Readings Cinema Brickworks Watch a newly released movie and enjoy a café lunch afterward.	\$15* (plus movie & lunch)
TUESDAY 10th	Hogan's Hotel, Wallan Situated in the Melbourne highlands, Hogans Bar and Restaurant welcomes you to sample its style, unique atmosphere and friendly service.	\$15* (plus lunch)
TUESDAY 17th	The Courthouse Hotel, Bacchus Marsh The Courthouse Hotel is a snug restaurant with a warm ambient environment for a chilly winter's day.	\$15* (plus lunch)
TUESDAY 24th	Legends Bistro, Moonee Valley From pub classics to daily specials, a visit to Legends is a mouth-watering experience.	\$15* (plus lunch)

CANTERBURY CENTRE Outings

**To receive the subsidised price you will need a My Aged Care number and referral.*

MAY Outings

FRIDAY 2nd	Marysville Café A scenic drive to Marysville, lunch at Keppel Café, and a walk around town.	\$15* (plus lunch)
TUESDAY 6th	Moorabbin Airport Museum and Lunch Moorabbin RSL Explore aviation history, followed by lunch at Moorabbin RSL. \$7 Museum entry fee payable on the day.	\$15* (plus lunch)
FRIDAY 9th	Italian Sports Club, Werribee The Italian Sports Club of Werribee is one of the favourite food venues for locals in the Western suburbs. Enjoy delicious, good-value Italian cuisine.	\$15* (plus lunch)
TUESDAY 13th	Grand Hotel Warrandyte Visit the 2024 Best Pub and be a food critic for future outings.	\$15* (plus lunch)
FRIDAY 16th	Wyreena Community Arts Centre, Croydon Come and explore this historic building and elegant gardens in Croydon. We'll enjoy an exhibition of local artists' work before lunch in the glass conservatory café.	\$15* (plus lunch)
TUESDAY 20th	Pelicans Landing Restaurant, Williamstown Enjoy fresh seafood and meats in historic Williamstown with stunning city and waterfront views, followed by a town walk.	\$15* (plus lunch)
FRIDAY 23rd	Robert Gordon Pottery & Cafe, Pakenham Browse the homewares at the Robert Gordon Pottery Outlet and enjoy lunch at the onsite cafe.	\$15* (plus lunch)
TUESDAY 27th	Gardenworld Braeside Explore one of Melbourne's largest nurseries, featuring a café and a wide selection of plants and gifts.	\$15* (plus lunch)
FRIDAY 30th	Frankston Art Centre – Frankly Sinatra A tribute to Sinatra, Garland and Minnelli performed by Ian Stenlake and Michelle Fitzmaurice. We will enjoy a two-course lunch prior to the show.	\$67* (incl lunch)

BOROONDARA BLOKES

MONDAY 5th	Summers Hotel Hastings Enjoy classic pub meals at this friendly local establishment.	\$15* (plus lunch)
MONDAY 19th	Ceres Community Park and Merry's Café Walk through the community garden and enjoy a fresh, locally grown meal at Merri Café.	\$15* (plus lunch)

FOR BOOKINGS CALL 9880 4709

Follow BASScare on Facebook and Instagram for updates on social support activities, outings and our range of services. Simply search BASScareAgedCare, find our profile, and click Follow!

JUNE Outings

TUESDAY 3 rd	Yang's Place, Ringwood East Enjoy authentic Chinese cuisine crafted with passion and tradition.	\$15* (plus lunch)
FRIDAY 6 th	Cinema and Café Lunch Join us for a relaxing movie, tasty lunch and friendly chat.	\$15* (plus movie & lunch)
TUESDAY 10 th	The Carriage Café Seville Dine in a century-old train carriage situated on the Warburton Trail, enjoying a seasonal menu with local ingredients.	\$15* (plus lunch)
THURSDAY 12 th	NGV Martin Grant Fashion Exhibition A fashion exhibition showcasing Martin Grant's designs, blending form, comfort and elegance.	\$35* (plus lunch)
FRIDAY 13 th	Stamford Homestead Enjoy a fine dining experience with an award-winning seasonal menu in elegant dining rooms or a garden courtyard.	\$15* (plus lunch)
TUESDAY 17 th	Geelong Gallery Janenne Eaton Exhibition – <i>Early Start!</i> A major survey of Janenne Eaton's work, exploring environmental, political and cultural themes.	\$15* (plus lunch)
FRIDAY 20 th	Yarra Glen Hotel Visit this heritage-listed 1888 hotel in the Yarra Valley for hearty pub food and local wines in an historic setting.	\$15* (plus lunch)
TUESDAY 24 th	The Provender Country Bakehouse, Yea Join us for some delicious country baked goods, and a stroll along main street Yea.	\$15* (plus lunch)
FRIDAY 27 th	The Olive Tree Hotel Sunbury An historic landmark from 1902, offering hearty bistro fare.	\$15* (plus lunch)

BOROONDARA BLOKES

MONDAY 2 nd	Australian Rainbow Trout Farm / Local Cafe Try fishing at Macclesfield's trout farm and enjoy the fresh air. Remember – You Catch, You Keep, You Pay! \$12 entry fee payable on the day.	\$15* (plus lunch)
MONDAY 16 th	Ringwood Golf Club – Fox Cafe Enjoy food, coffee and drinks with a view over the golf course.	\$15* (plus lunch)
MONDAY 30 th	Sandringham Hotel A Bayside icon with great ocean views, fresh seafood and pub classics.	\$15* (plus lunch)

GROUP ACTIVITIES



Sewing Group

Thursdays 1.30pm

📍 Samarinda Community Centre



Art Hobby Group

Fridays 10.00am

📍 Samarinda Community Centre



Knitting & Crochet Group

Tuesdays 12.30pm

📍 Samarinda Community Centre (fortnightly)



Yoga

Thursdays 1.30pm

📍 Canterbury Centre



Mahjong

Every 1st & 3rd
Monday 1.30pm

📍 Canterbury Centre



Music Memories

Thursdays 2.00pm

📍 Canterbury Centre (fortnightly)

Chatty Cafe:

Enjoy coffee, tea and great conversation with others in a relaxed environment.

Fridays 10.00am

📍 Canterbury Centre

Mondays 10.00am

📍 Samarinda Community Centre



Spreading

HAPPINESS

with Chatty Cafe

Canterbury Centre Transport Services – Expressions of Interest

The Canterbury Centre is exploring expanding its transport services for clients attending individual appointments like podiatry and hairdressing. We are seeking expressions of interest from the community to assess demand. If interested, please advise reception at Canterbury Centre.

LIFELONG LEARNING GROUP AT CANTERBURY CENTRE

Lifelong Learning Group keeps our brains active and healthy while enriching our lives. Every week enjoy a different themed topic and speaker.

Stay for lunch (\$13*) afterwards and enjoy the conversation with our friendly group.

Wednesdays ^{from} 10.30am

2 Rochester Road, Canterbury

\$10*

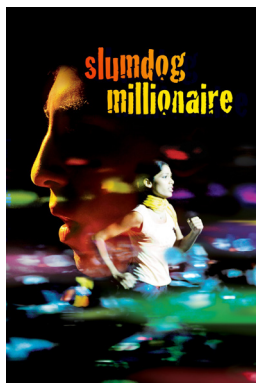
come along and try

FIRST SESSION FREE

WEDNESDAY 7 th MAY	Celebrate Mother's Day with Sweet Indulgence! Discussion on motherhood, famous women and the origins of Mother's Day, with chocolate tastings and a special gift.
WEDNESDAY 14 th MAY	No Program – Biggest Morning Tea
WEDNESDAY 21 st MAY	India A vibrant collision of colour and culture, India is an alluring destination. BASScare's Caroline shares her travel experiences in India, including visits to Delhi, Jaipur and the Taj Mahal.
WEDNESDAY 28 th MAY	Supporting a Healthy lifestyle Cynthia and Christian discuss wellbeing practices to reduce anxiety, tension and pain while improving circulation and mobility.
WEDNESDAY 4 th JUNE	Queen Elizabeth II Reminiscing A look back at the Queen's 1954 visit to Melbourne with digital images and videos. Please bring along any royal memorabilia and stories.
WEDNESDAY 11 th JUNE	Everything 1940's A themed event featuring 1940's fashion, swing music and nostalgia, followed by a vintage mocktail and a classic 1940's meal.
WEDNESDAY 18 th JUNE	Blue Mountains Matthew Ety-Leal discusses the history and tourism of the Blue Mountains, including the Carrington Hotel and Norman Lindsay's property.
WEDNESDAY 25 th JUNE	Elvis and Variety Show Ricky Neil-Vis performs a mix of Elvis and country songs, promising a fun and entertaining experience.

WEDNESDAY AFTERNOON MOVIES – CANTERBURY CENTRE

Join us for a film or documentary each Wednesday afternoon at 1.30pm. **Cost: \$7***



MAY 7 th	A Man Called Otto (2023) Based on the bestselling novel. A grumpy widower's life changes when a lively family moves in next door. Starring Tom Hanks.
MAY 14 th	No Film
MAY 21 st	Slumdog Millionaire (2008) An orphaned teen in Mumbai is accused of cheating while on the verge of winning a game show.
MAY 28 th	Grandma (2015) A teenager seeks help from her sharp-tongued grandmother (Lily Tomlin) after an unplanned pregnancy.
JUNE 4 th	The Other Boleyn Girl (2008) Two sisters (Natalie Portman and Scarlett Johansson) vie for the love of King Henry VIII.
JUNE 11 th	Atonement (2007) A dramatic romance about the tragic impact of a young girl's lie on the lives of two lovers, based on Ian McEwan's novel. Starring Keira Knightley and James McAvoy.
JUNE 18 th	Blueback (2022) Mia Wasikowska, Radha Mitchell and Eric Bana star in this poignant, visually stunning film about a child who befriends a magnificent wild blue grouper while diving.
JUNE 25 th	Return of the King: the Fall and Rise of Elvis Presley (2024) He had one chance to show the world he was still the King of Rock 'n' Roll. A documentary exploring Elvis Presley's legendary 1968 comeback special.

FRIDAY flicks

at Samarinda



Join us once a month for a Friday afternoon showing of a popular film you may have missed at the cinema.

\$7*

Price includes

MOVIE
with
INTERMISSION

+

TEA/COFFEE
and
ICE-CREAM

Join us for lunch prior. \$13* (bookings essential)

May 30th 1.30pm

THELMA (2024)

A 93-year-old woman, Thelma Post (June Squibb), embarks on a daring journey to recover money stolen by a scammer posing as her grandson. Blending action and comedy, the film offers a humorous take on aging with determination.

June 27th 1.30pm

THE SIX TRIPLE EIGHT (2024)

Based on a true story, this film follows 855 Black women from the US Women's Army Corps who were sent to the UK during WWII to clear a massive postal backlog, ensuring millions of letters reached their intended recipients.

Samarinda Community Centre 296 High Street, Ashburton
Transport: \$5* each way (booking required & conditions apply)

North Balwyn Seniors Centre

Group Exercise Classes

.....

Hairdressing

.....

Podiatry



9 Marwal Avenue, Balwyn North Phone 9880 4752
Office Hours: Monday to Friday, 9am – 3.30pm (closed Public Holidays)

May / June 2025 /// STAYING CONNECTED

11



*Social Activity Program Fees – Terms & Conditions

Most of BASScare's Social Support clients are eligible for the Commonwealth Home Support Program subsidy. The prices listed in this newsletter are the subsidised price. To receive this subsidy, you will need a My Aged Care number and a referral code.

Working Bee Afternoon Tea

Help with the July/August Staying Connected mail-out at 1.30pm on Wednesday June 18th, at Canterbury Centre.

Enjoy good company and a chat about the next newsletter, plus a cuppa and cake as a Thank You!

Transport

Cost: \$10* per return trip to or from Canterbury Centre/Samarinda Community Centre activities and lunch (subject to availability).

Canterbury Centre Pick-up Areas: Camberwell, Canterbury, Surrey Hills, Balwyn.

Samarinda Community Centre Pick-up Areas: Camberwell, Glen Iris, Ashburton, Ashwood.

Canterbury Centre Bus Outings: Kew, North Balwyn, Balwyn, Canterbury, Surrey Hills, Camberwell, Hawthorn.

Samarinda Community Centre Outings: Camberwell, Glen Iris, Ashburton, Ashwood.

BOOKING TWO DAYS PRIOR IS ESSENTIAL.

BASScare acknowledges the Wurundjeri Woi-wurrung people as the Traditional Owners and original custodians of this land, and we pay our respects to their Elders past and present.

BOOKINGS ESSENTIAL FOR ALL SOCIAL ACTIVITIES & TRANSPORT

Canterbury Centre Phone: 9880 4709

Samarinda Community Centre Phone: 9058 6060

If you have any feedback or suggestions about trips, activities or groups, please let us know. Feedback cards are available at reception or online at:

www.basscare.org.au/contact-us/

**We acknowledge the outstanding contribution
Volunteers make to BASScare's services & activities.**

**SCAN TO
EXPLORE
the many
BASScare
services**



- ⦿ **Canterbury Centre:** Limited parking available (watch parking restrictions). Accessible via the 285-bus route or a short walk from Canterbury Station.
- ⦿ **Samarinda Community Centre:** Parking available underneath, behind and on nearby streets; accessible via the 734-bus route or a short walk from Ashburton Station.
- ⦿ **North Balwyn Seniors Centre:** Ample street parking; a short walk from the Balwyn North Village stop on the 48 Tram.