

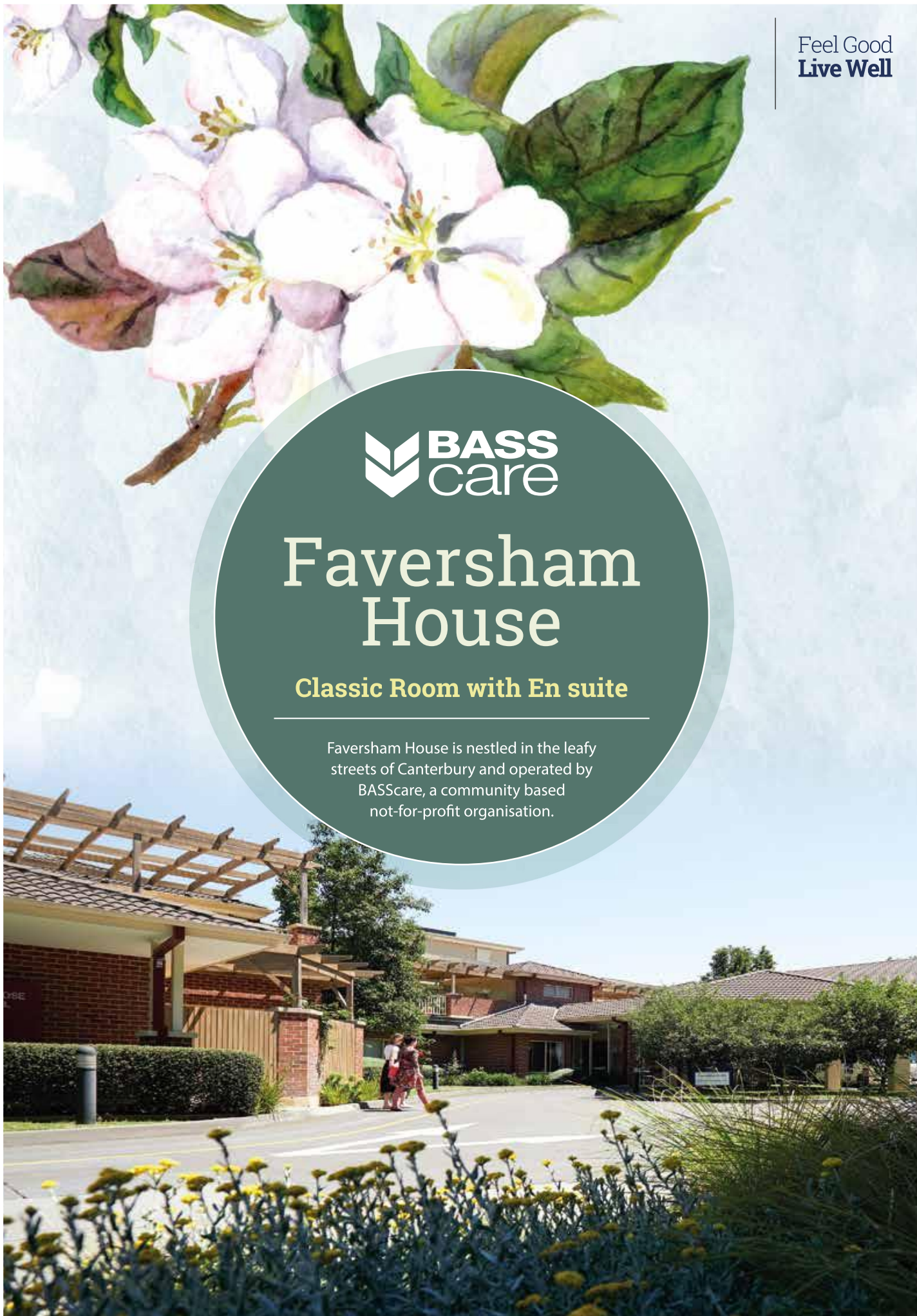
Feel Good  
**Live Well**

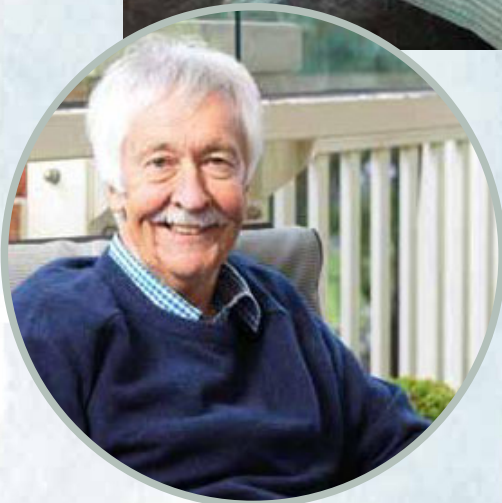


# Faversham House

## **Classic Room with En suite**

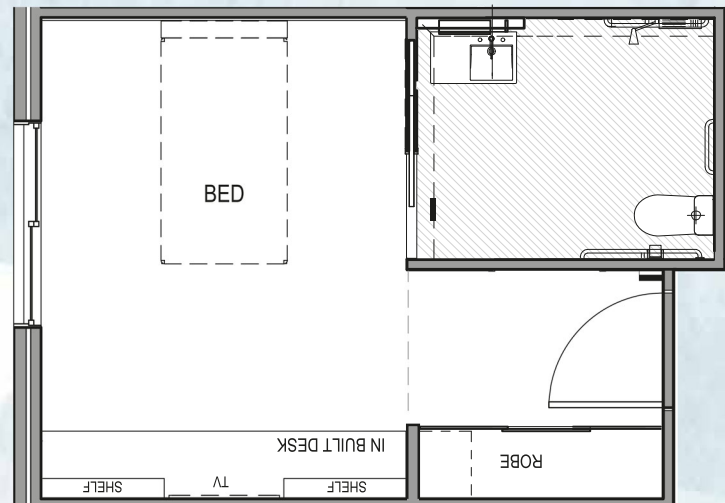
Faversham House is nestled in the leafy streets of Canterbury and operated by BASScare, a community based not-for-profit organisation.





**21-23sqm\***

\*room sizes and layout vary



## Faversham House

Classic Rooms include the following amenities:



En suite  
with Shower



Individual heating  
and cooling



Desk



Comfortable chair for  
reading and relaxing



Built-in  
wardrobe



Height adjustable  
king size single bed



Bedside  
drawers

To find out more about Faversham House, please contact our Client Services Manager.

Note: soft furnishings and decorations shown are for styling purposes only.

Residents are encouraged to complete the look of their room with familiar personal items for a homelike feel.

**BOROONDARA AGED SERVICES SOCIETY**

EMAIL [admissions@basscare.org.au](mailto:admissions@basscare.org.au) PHONE **03 8809 4901**

WEBSITE [www.basscare.org.au/faversham-house-residential-aged-care-facility/](http://www.basscare.org.au/faversham-house-residential-aged-care-facility/)