

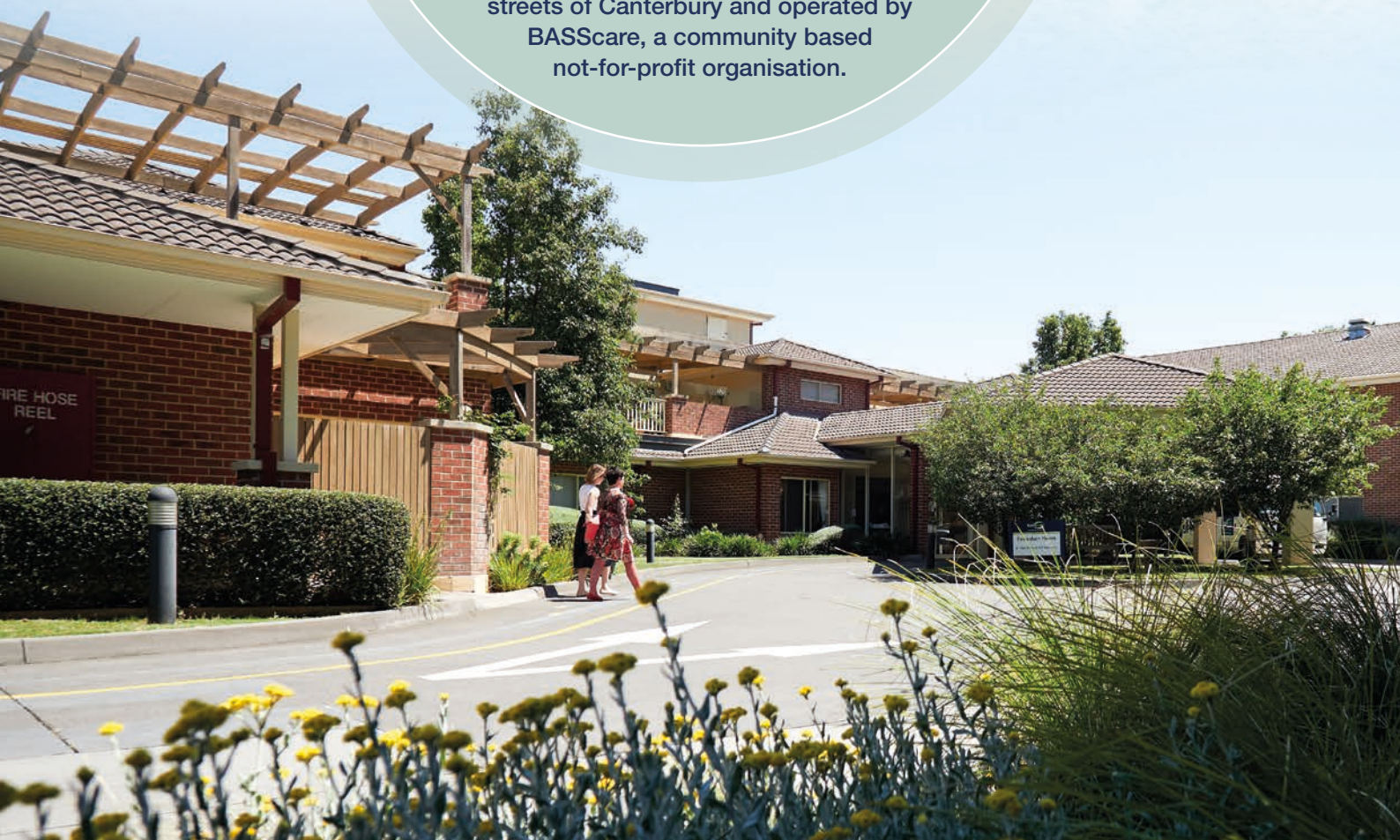
Live Well  
Feel Good



# Faversham House

## Superior Large Single Room

Faversham House is nestled in the leafy streets of Canterbury and operated by BASScare, a community based not-for-profit organisation.

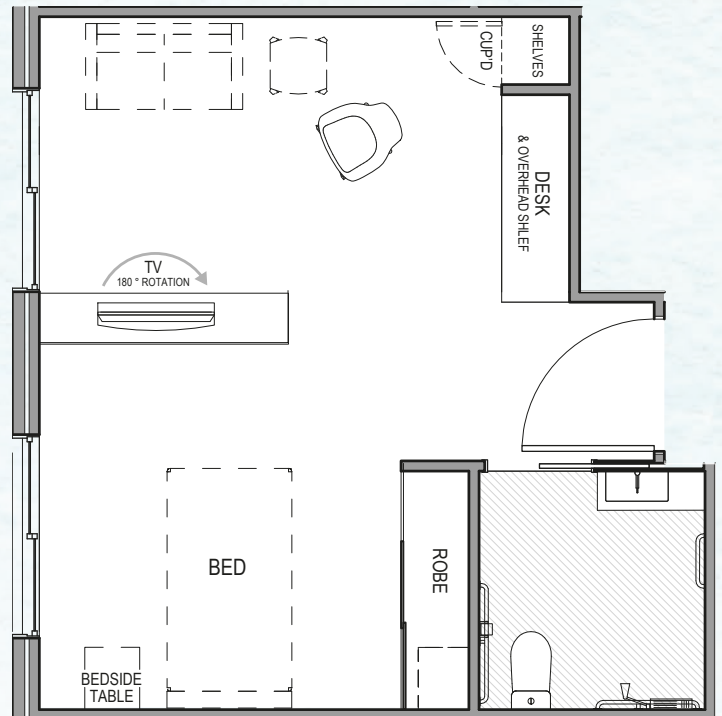


Faversham House Common Area  
artist drawing



31-32sqm\*  
with your own  
**Sitting Room**

\*room sizes vary



**Faversham House**

Superior Large Single Rooms include the following amenities:



En suite  
with Shower



180° rotation  
flat screen television  
with remote control



Individual heating  
and cooling



Desk



Built-in  
wardrobe



Height adjustable  
king size single bed



Bedside  
drawers



Comfortable chair for  
reading and relaxing

To find out more about Faversham House, please **contact Kym Wise**, Clients Services Manager.